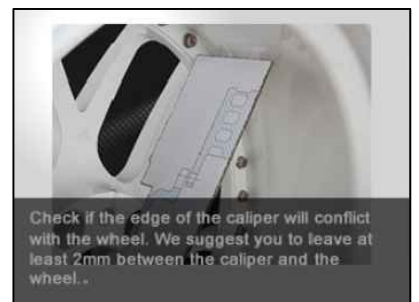
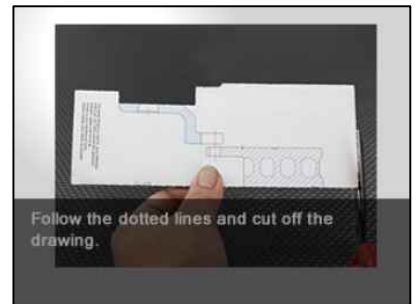
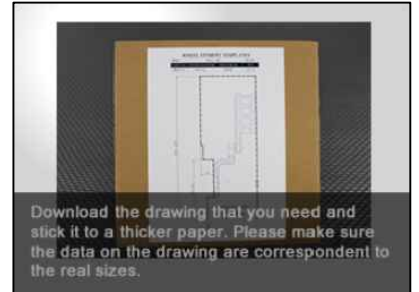
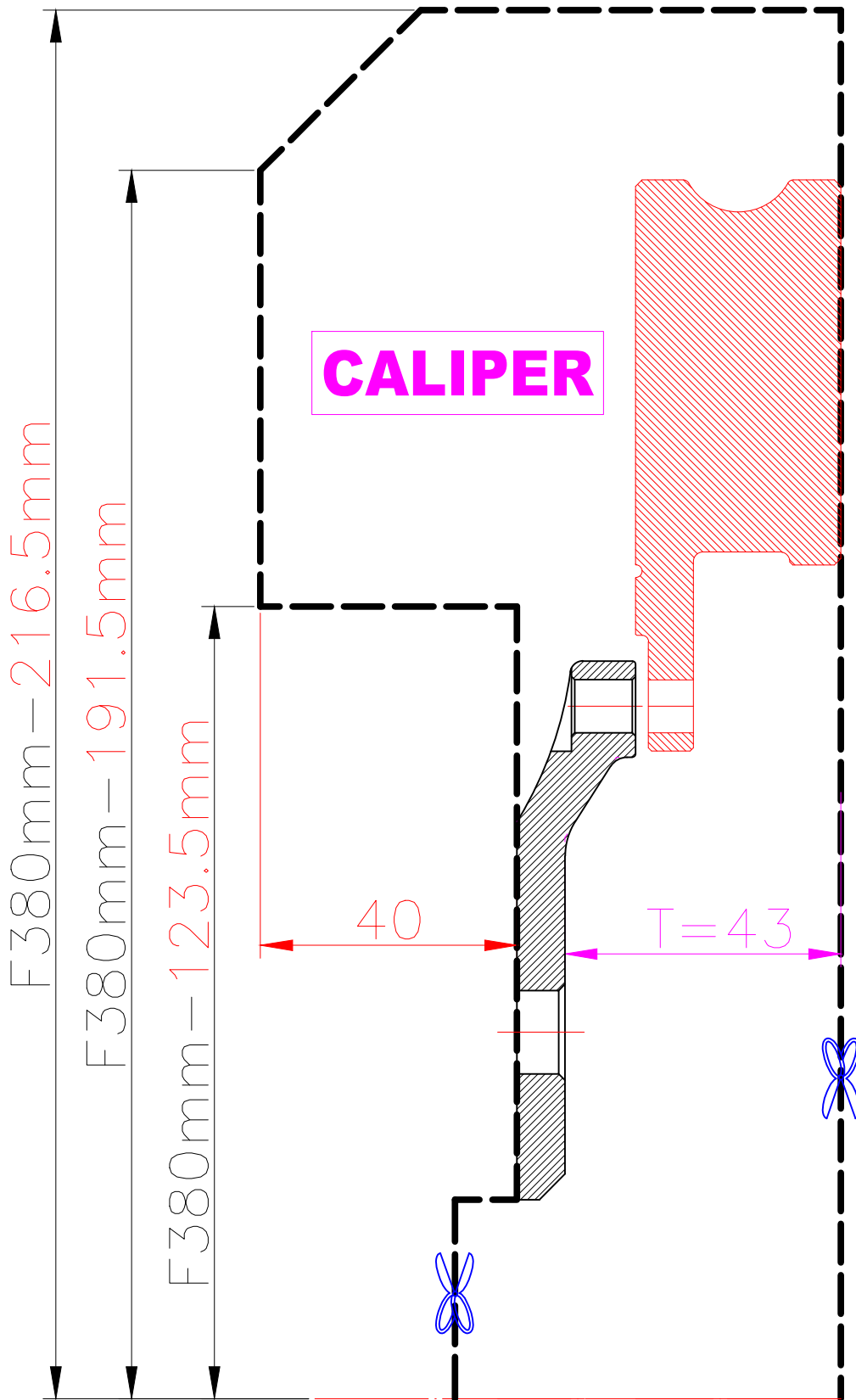


# WHEEL FITMENT TEMPLATES

TOYOTA	ALPHARD III (AH30)	15~UP	
PARTS NO.	ROTOR DIAMETER	FRONT/REAR	PCD
TO32-1	380mm X 32mm	FRONT	5X114.3



The wheel fitment is only for your reference and it can not 100% ensure the clearance between caliper and rim is ok. if there is any interference issue, please change your wheel as possible.