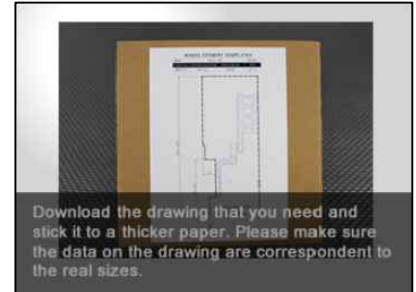
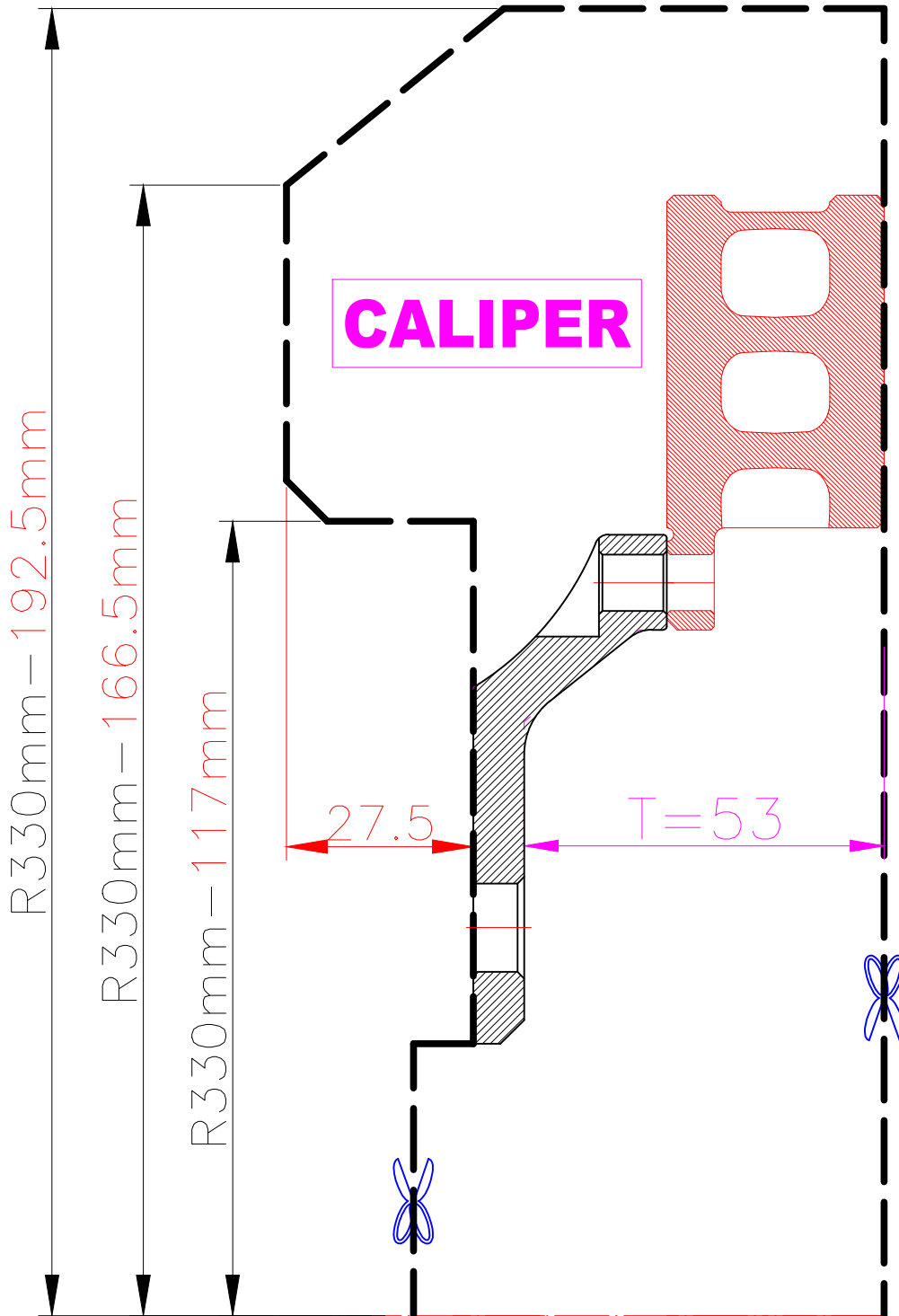


# WHEEL FITMENT TEMPLATES

MITSUBISHI		EVO10	08~16
PARTS NO.	ROTOR DIAMETER	FRONT/REAR	PCD
MI08-1-R	330mm X 32mm	REAR	5X114.3



The wheel fitment is only for your reference and it can not 100% ensure the clearance between caliper and rim is ok. if there is any interference issue, please change your wheel as possible.