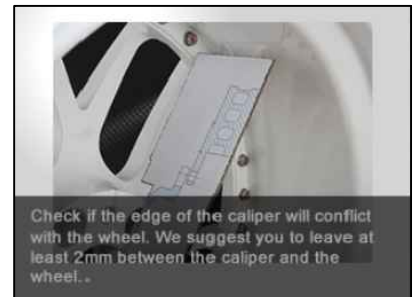
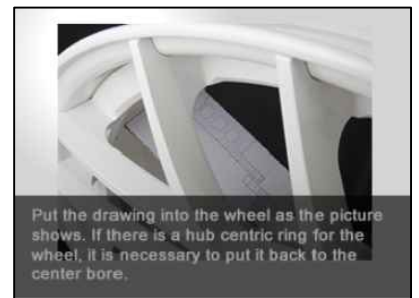
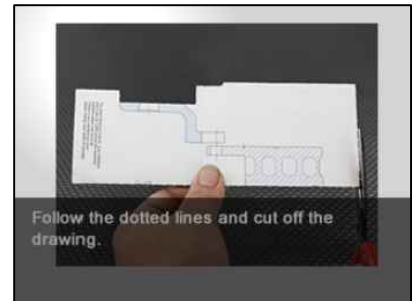
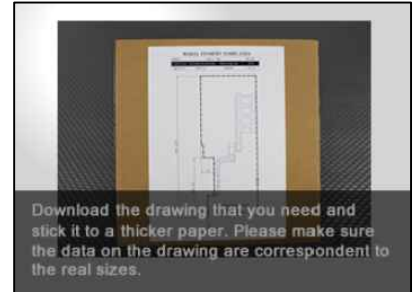
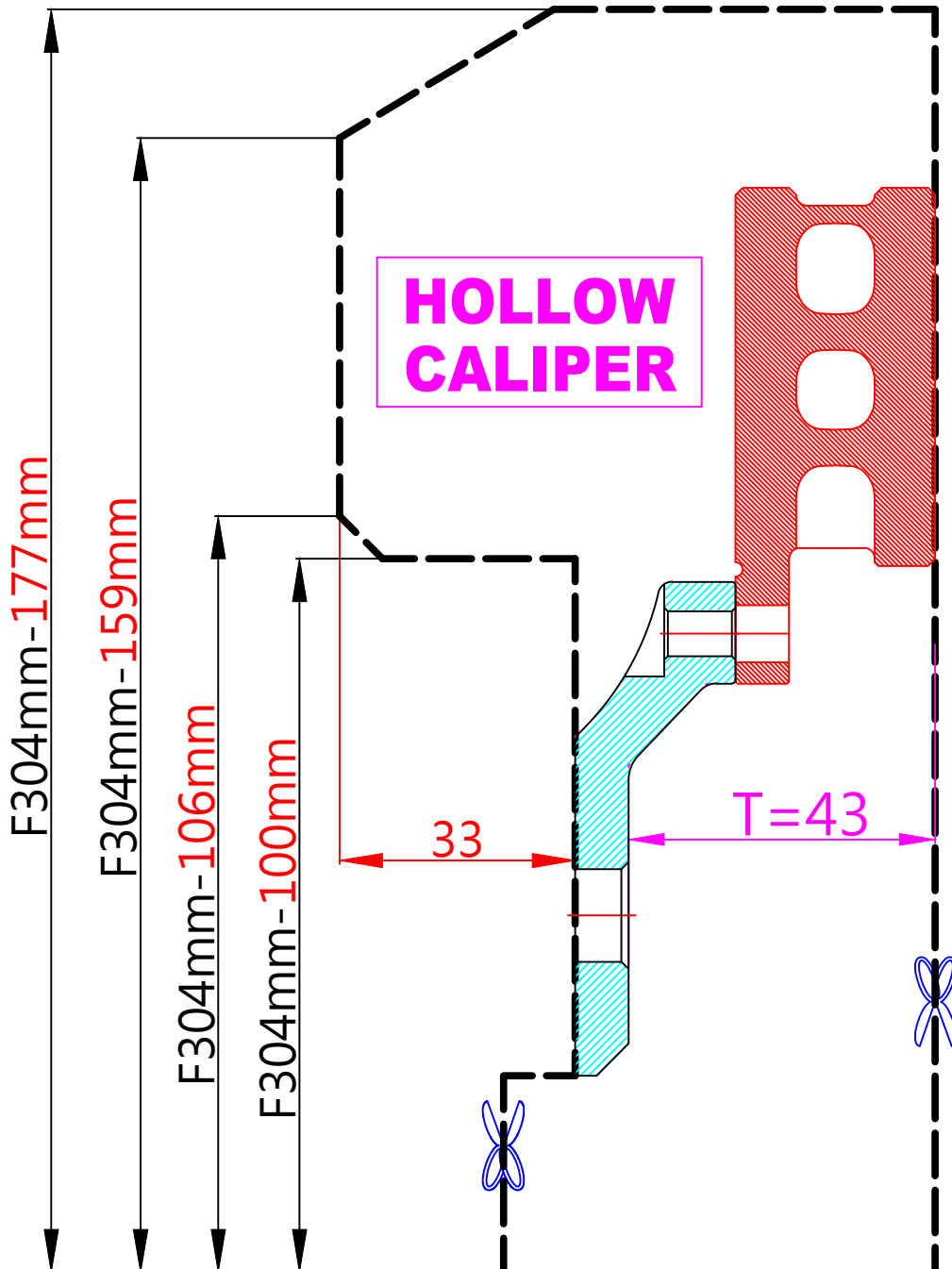


# WHEEL FITMENT TEMPLATES

MAZDA	MX-5	90~98	
PARTS NO.	ROTOR DIAMETER	FRONT/REAR	PCD
MA07	304mm X 28mm	FRONT	4 X 100



The wheel fitment is only for your reference and it can not 100% ensure the clearance between caliper and rim is ok. if there is any interference issue, please change your wheel as possible.