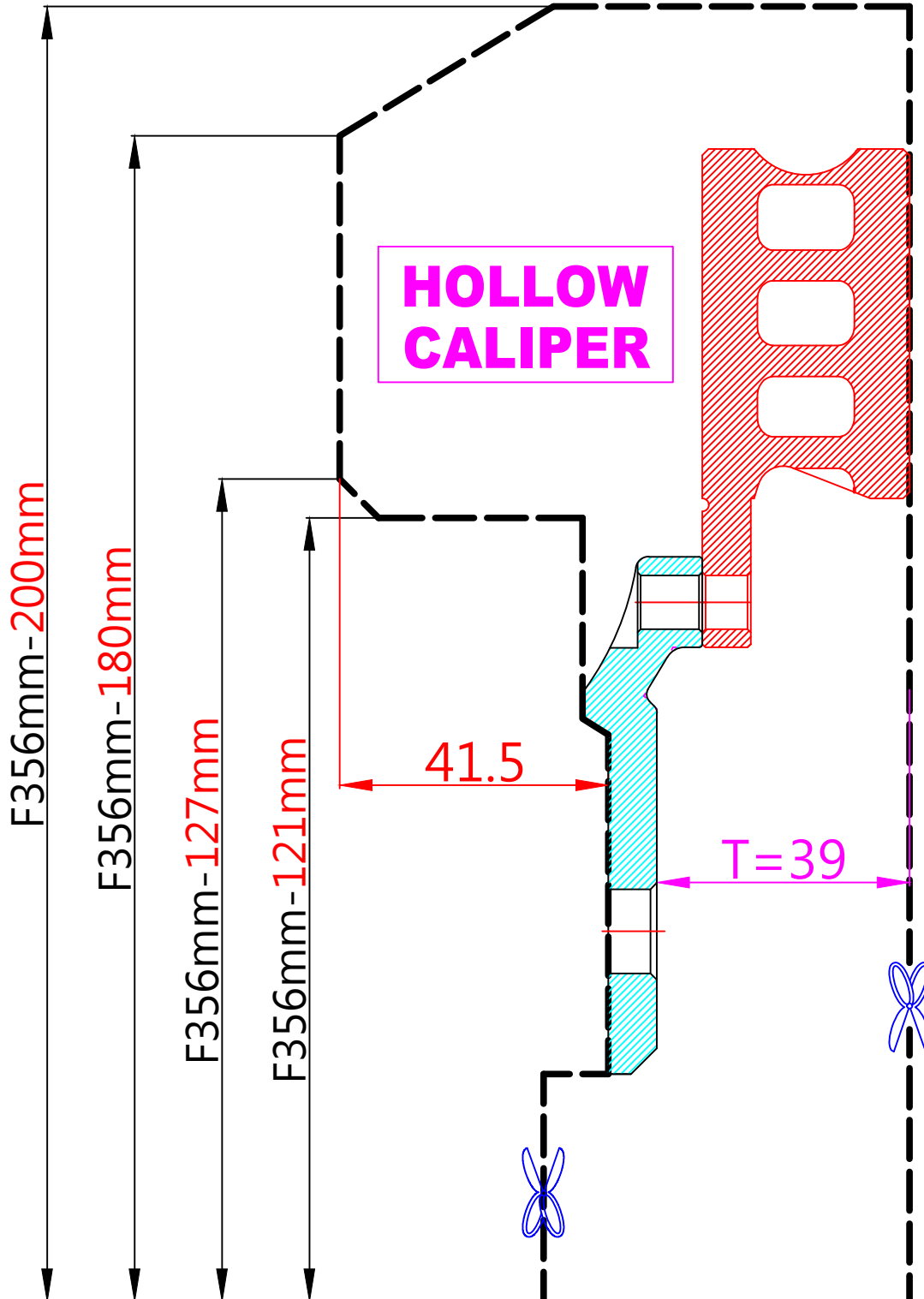
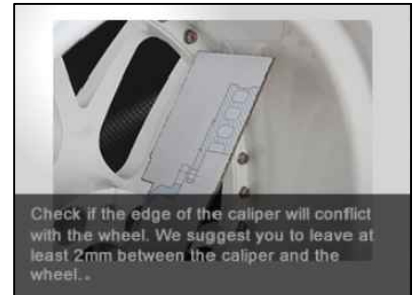
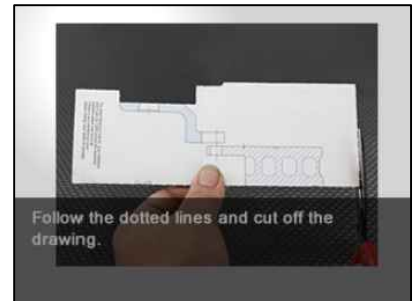
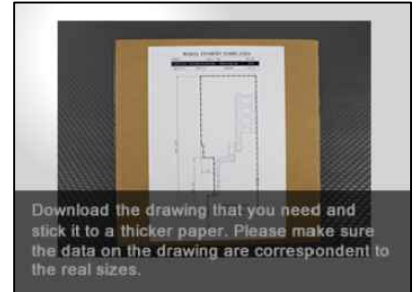


# WHEEL FITMENT TEMPLATES

HONDA	S2000 AP1	99~03	
PARTS NO.	ROTOR DIAMETER	FRONT/REAR	PCD
HO12	356mm X 32mm	FRONT	5X114.3



**HOLLOW CALIPER**



The wheel fitment is only for your reference and it can not 100% ensure the clearance between caliper and rim is ok. if there is any interference issue, please change your wheel as possible.