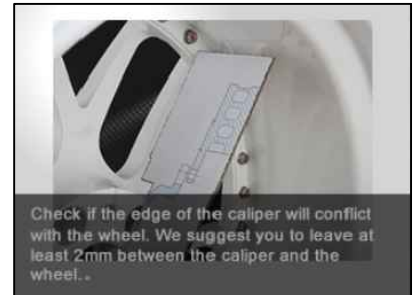
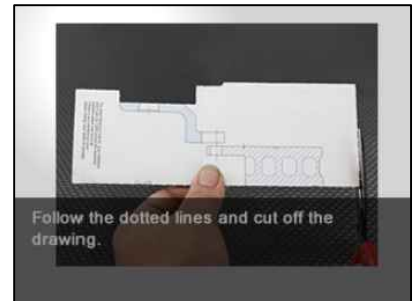
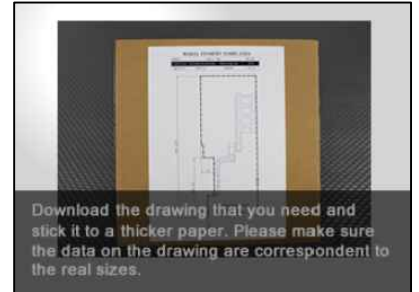
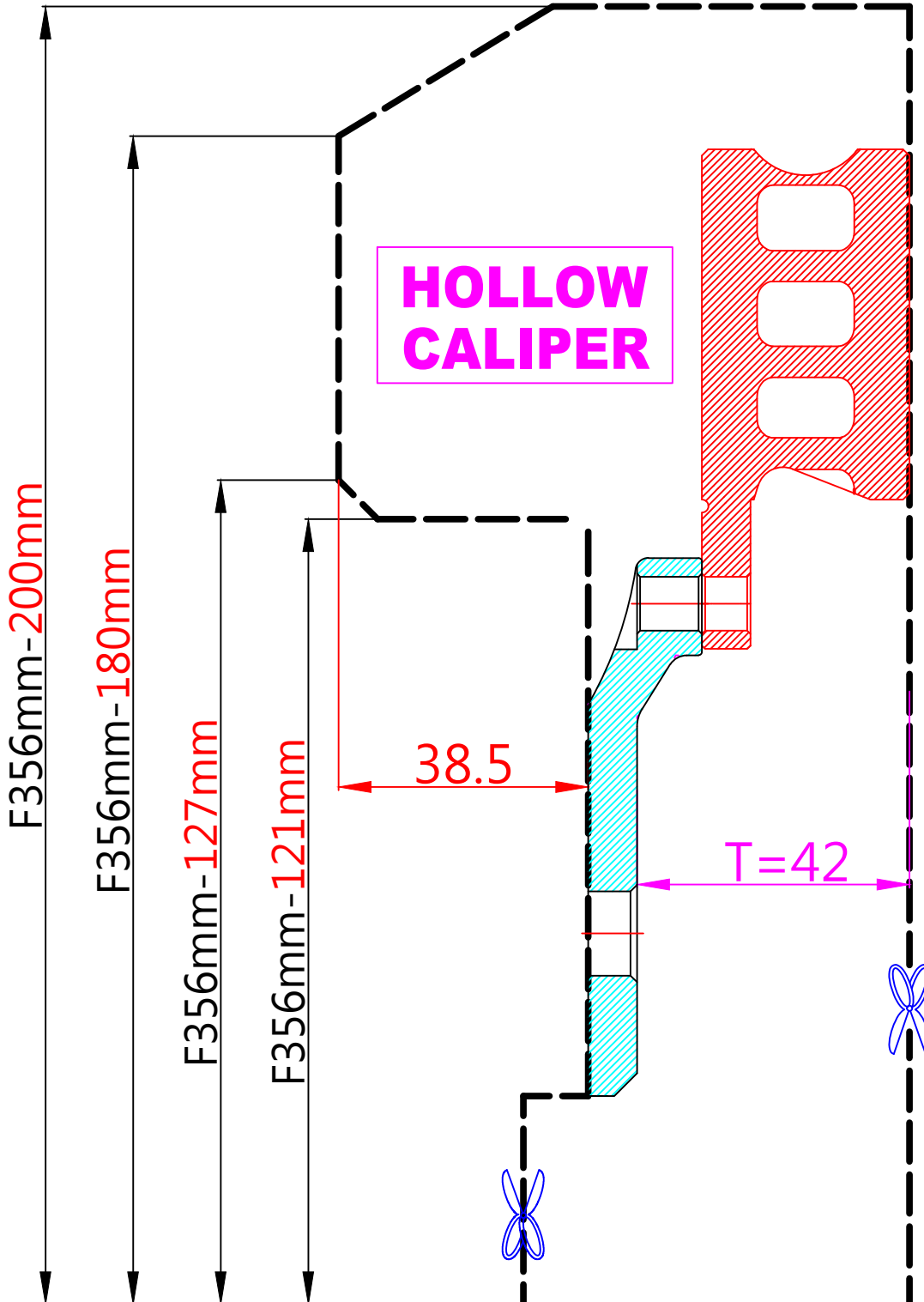


# WHEEL FITMENT TEMPLATES

HONDA	CIVIC FE/FL	21~UP
PARTS NO.	ROTOR DIAMETER	FRONT/REAR
HO45	356mm X 32mm	FRONT
		PCD
		5X114.3



The wheel fitment is only for your reference and it can not 100% ensure the clearance between caliper and rim is ok. if there is any interference issue, please change your wheel as possible.