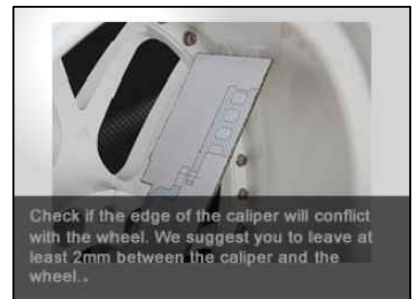
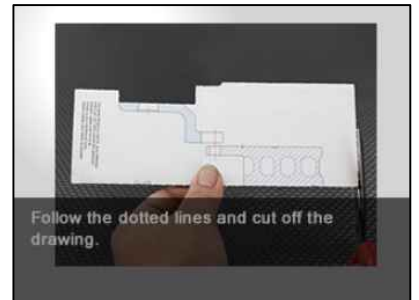
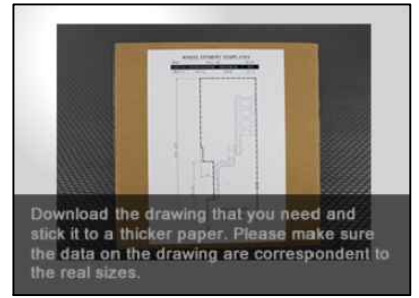
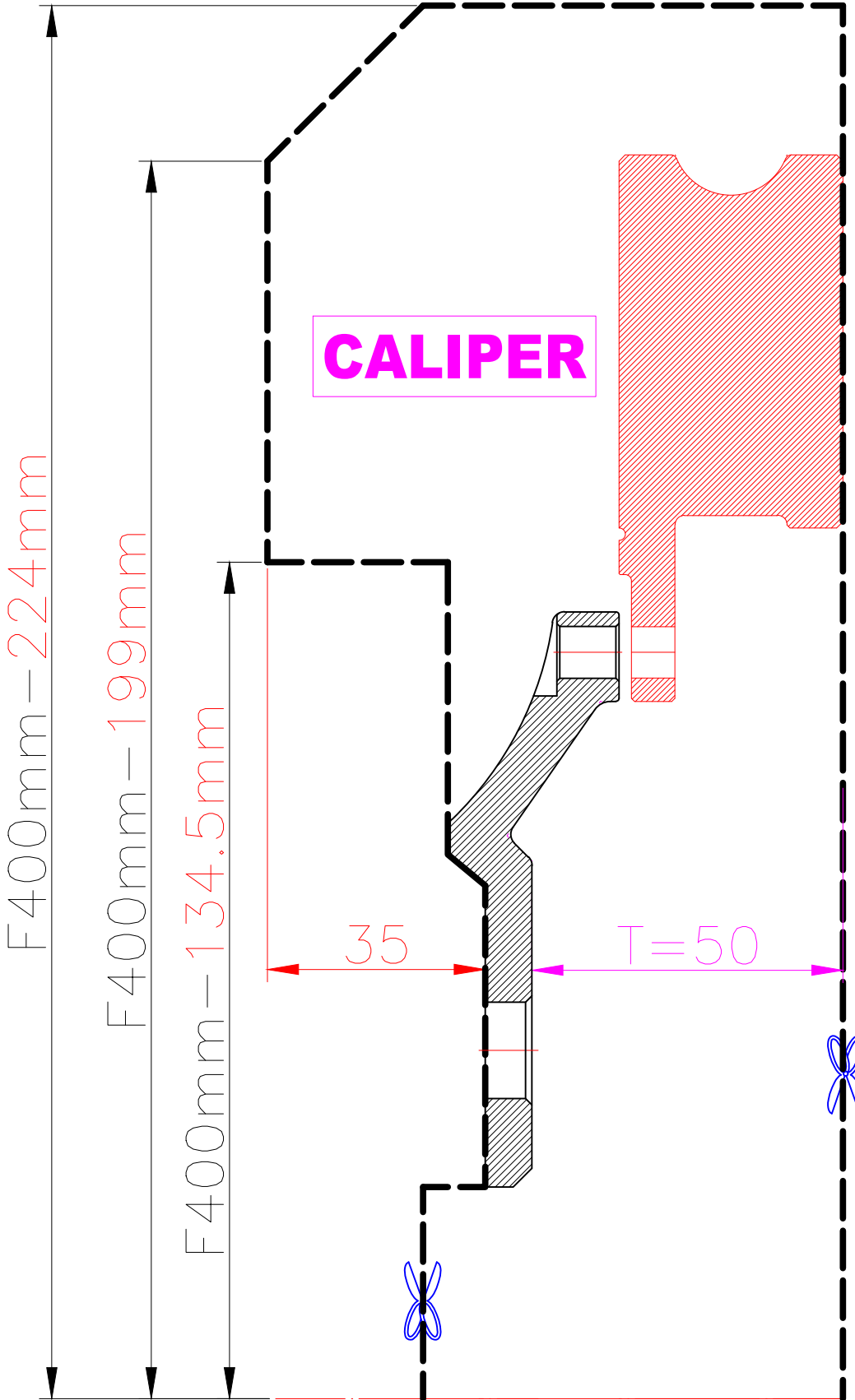


BENTLEY		CONTINENTAL GT V8 MK2		11~18
PARTS NO.	ROTOR DIAMETER	FRONT/REAR	PCD	
BL02	400mm X 36mm	FRONT	5X112	



The wheel fitment is only for your reference and it can not 100% ensure the clearance between caliper and rim is ok. if there is any interference issue, please change your wheel as possible.