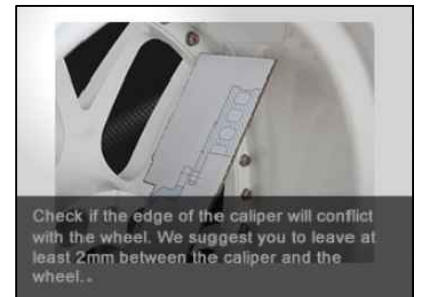
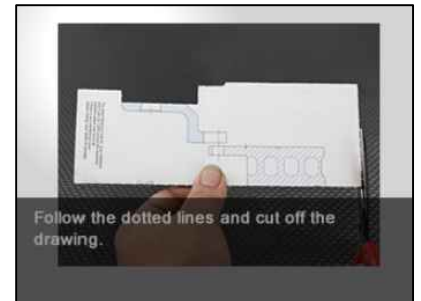
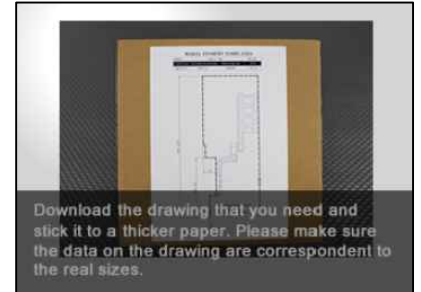
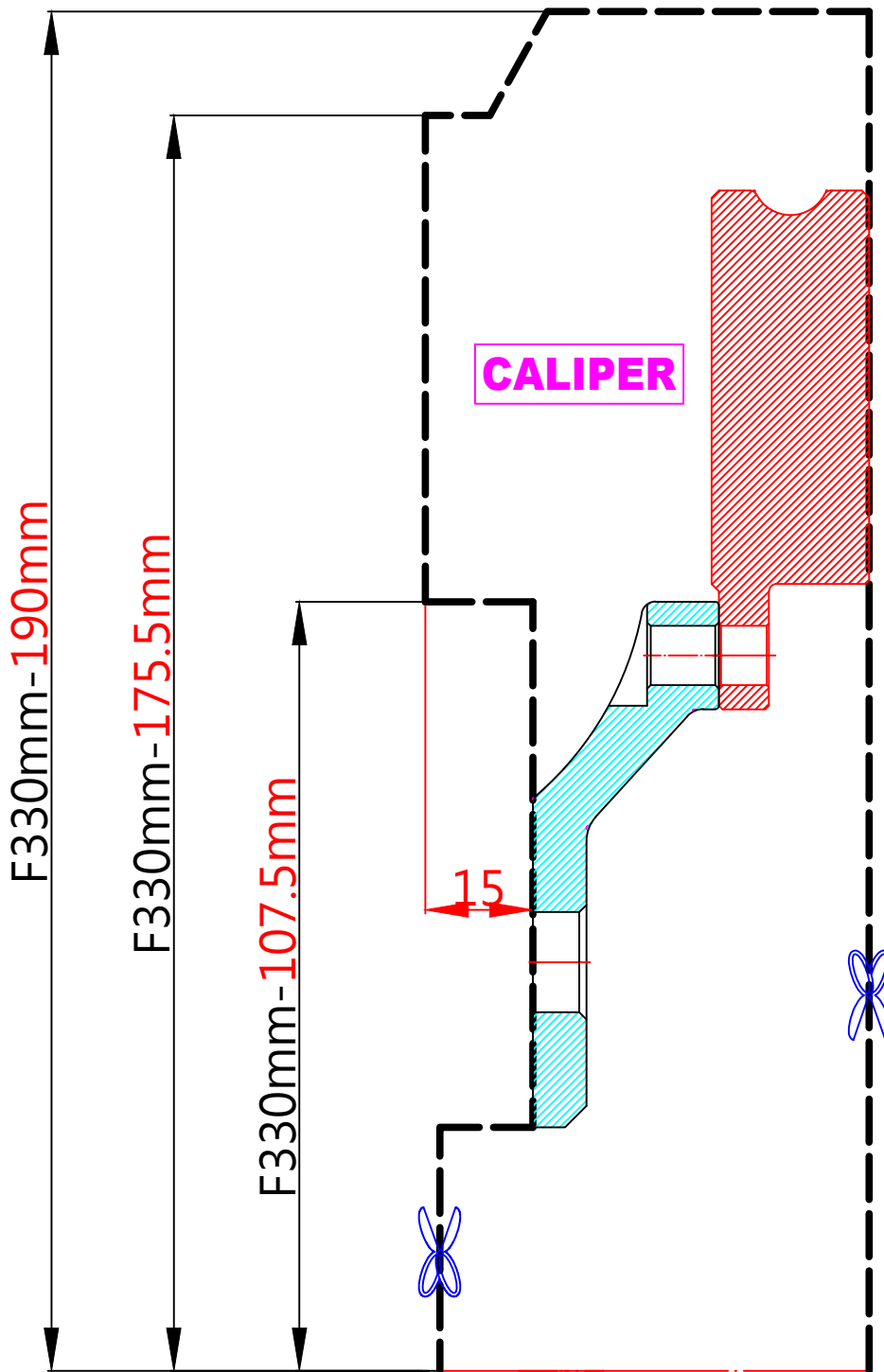


WHEEL FITMENT TEMPLATES

MAZDA	3(BP)	19~UP
PARTS NO.	ROTOR DIAMETER	FRONT/REAR
MA26	330mm X 22mm / 3POT	FRONT
		PCD
		5X114.3



The wheel fitment is only for your reference and it can not 100% ensure the clearance between caliper and rim is ok. if there is any interference issue, please change your wheel as possible.