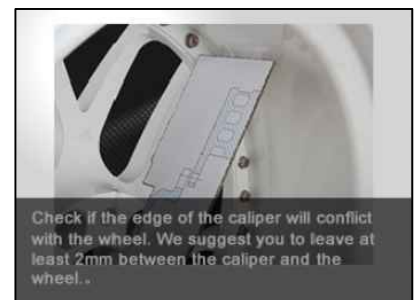
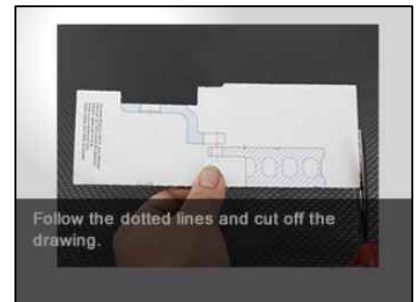
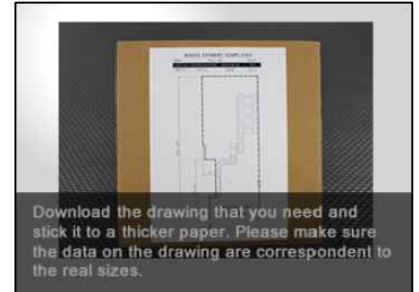
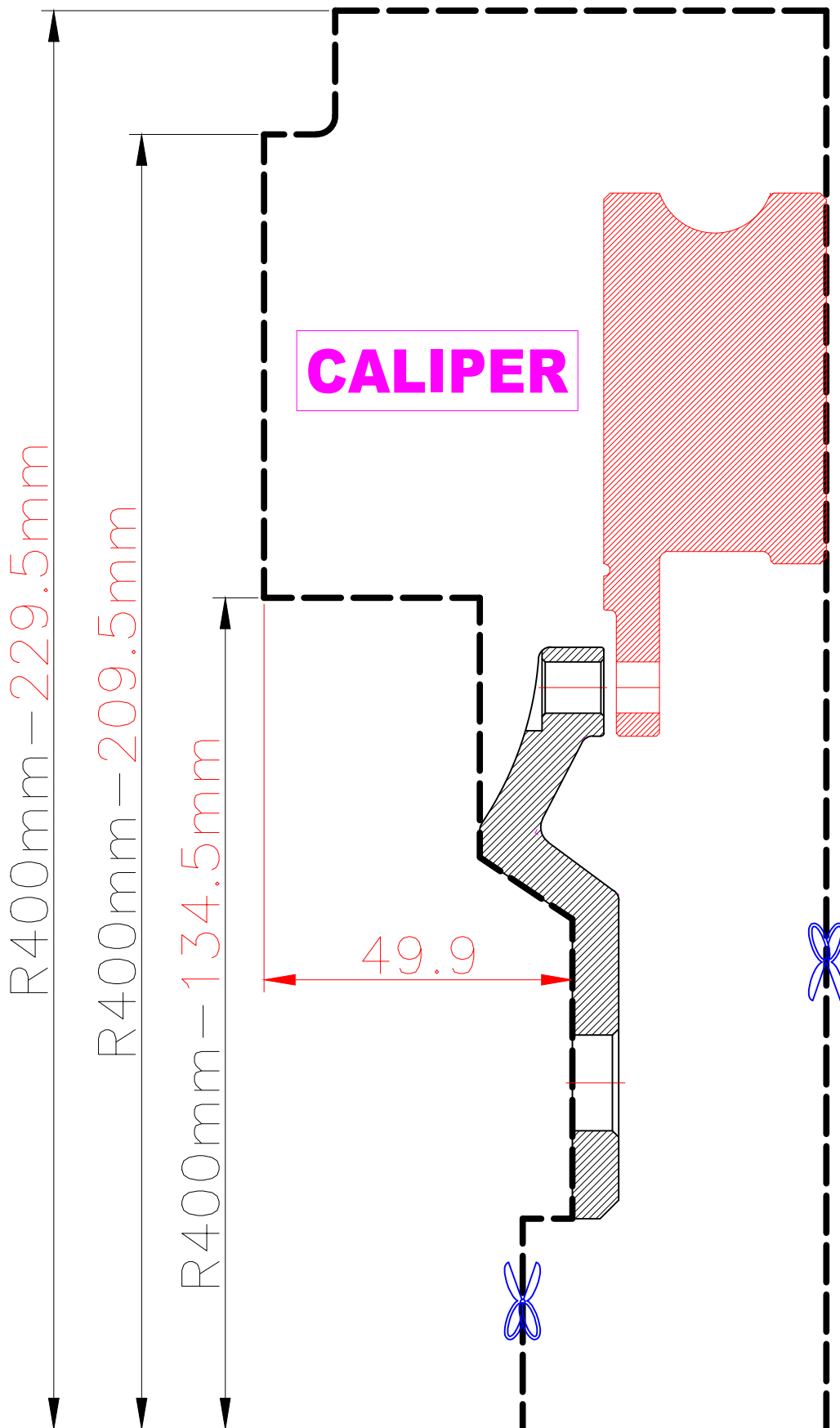


WHEEL FITMENT TEMPLATES

BENTLEY		CONTINENTAL GT V8 MK2 (6 points 8.0 MM)		11~18
PARTS NO.	ROTOR DIAMETER	FRONT/REAR	PCD	
BL02-R	400mm X 36mm	REAR	5X112	



The wheel fitment is only for your reference and it can not 100% ensure the clearance between caliper and rim is ok.